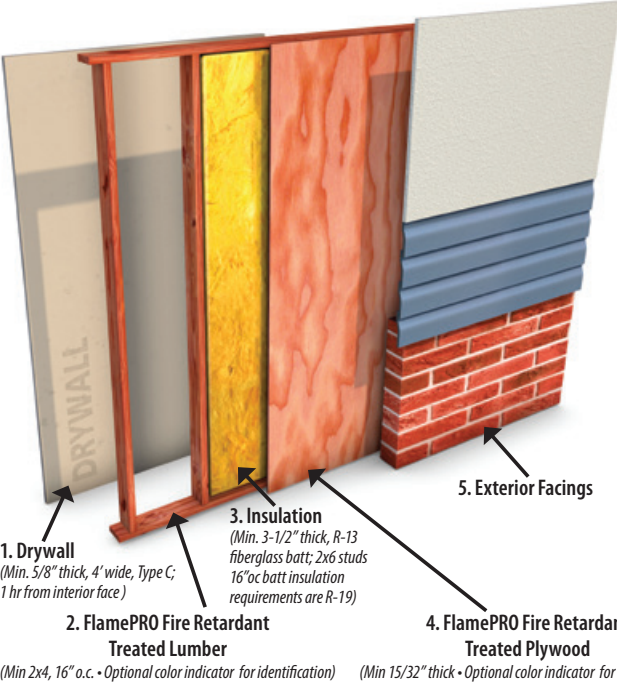
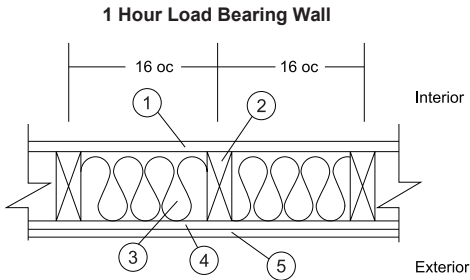


1 & 2 HOUR TESTED INTERIOR WALL ASSEMBLIES



1 Hour Tested Interior Wall Assembly (ASTM-E119)

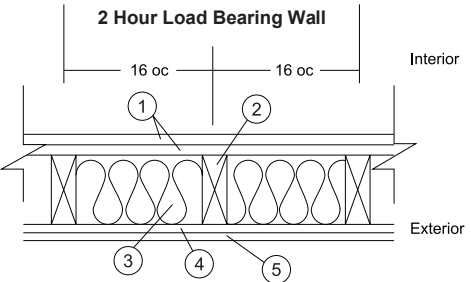


- 1. Drywall (1 hr from interior face)
- 2. FlamePRO Lumber
- 3. Insulation
- 4. FlamePRO Plywood
- 5. Exterior Facings

Max. Tested Load:
100% of Design Load

Fire Ratings:
1 hour, load bearing rated from one side (interior side only).
For details refer to ESR Report 4244.

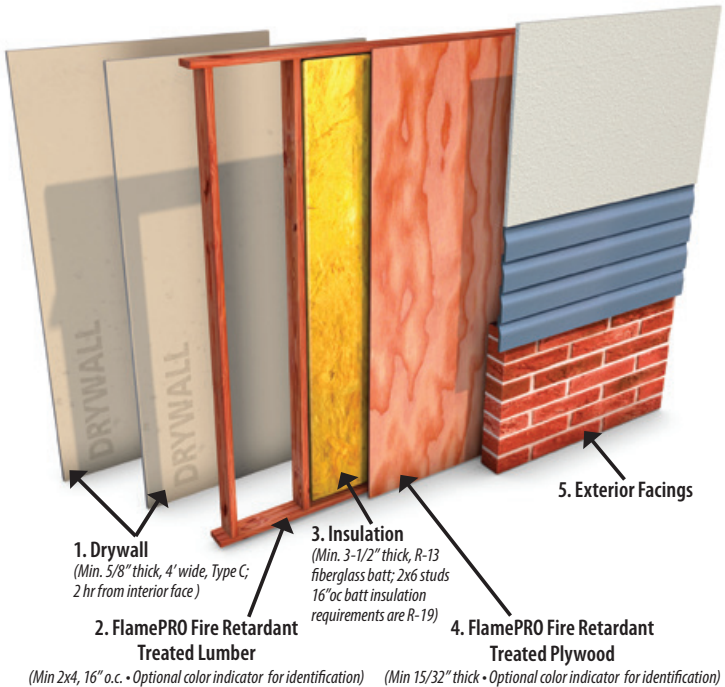
2 Hour Tested Interior Wall Assembly (ASTM-E119)



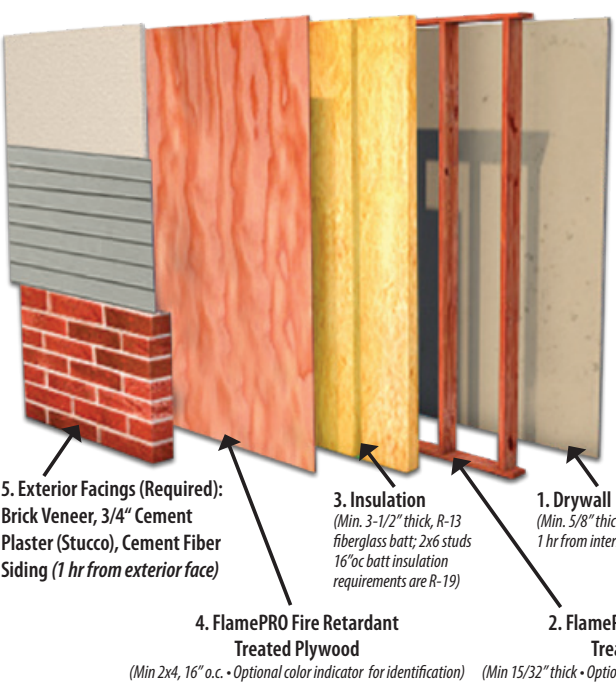
- 1. Drywall (2 hr from interior face)
- 2. FlamePRO Lumber
- 3. Insulation
- 4. FlamePRO Plywood
- 5. Exterior Facings

Max. Tested Load:
100% of Design Load

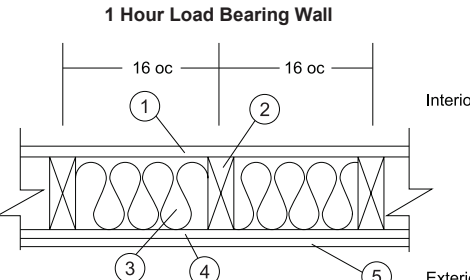
Fire Ratings:
2 hour, load bearing rated from one side (interior side only).
For details refer to ESR Report 4244.



1 & 2 HOUR TESTED EXTERIOR WALL ASSEMBLIES



1 Hour Tested Exterior Wall Assembly (ASTM-E119)

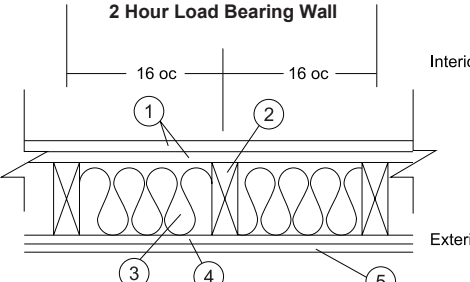


- 1. Drywall (1 hr from interior face)
- 2. FlamePRO Lumber
- 3. Insulation
- 4. FlamePRO Plywood
- 5. Exterior Facings (Required):
Brick Veneer, 3/4" Cement Plaster (Stucco), Cement Fiber Siding (1 hr from exterior face)

Max. Tested Load:
100% of Design Load

Fire Ratings:
1 hour, load bearing rated from one side (interior side only).
For details refer to ESR Report 4244.

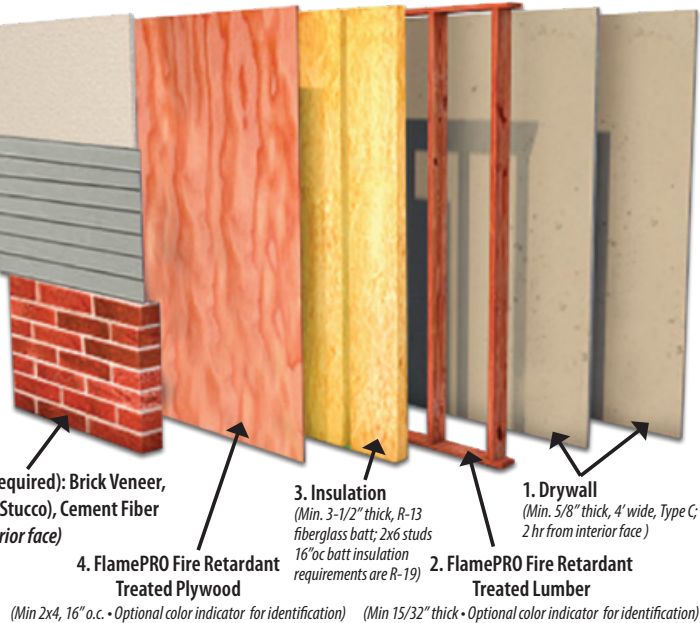
2 Hour Tested Exterior Wall Assembly (ASTM-E119)



- 1. Drywall (2 hr from interior face)
- 2. FlamePRO Lumber
- 3. Insulation
- 4. FlamePRO Plywood
- 5. Exterior Facings (Required):
Brick Veneer, 3/4" Cement Plaster (Stucco), Cement Fiber Siding (1 hr from exterior face)

Max. Tested Load:
100% of Design Load

Fire Ratings:
2 hour, load bearing rated from one side (interior side only). For details refer to ESR Report 4244.



IMPORTANT INFORMATION

- Do not burn fire retardant treated wood.
- Wear NIOSH N95 dust mask and goggles when cutting or sanding wood.
- Wear gloves when working with wood.
- Some fire retardant treated wood chemicals may migrate from the treated wood into soil/water or may dislodge from the treated wood surface upon contact with skin. Wash exposed skin areas thoroughly.
- All sawdust and construction debris should be cleaned up and disposed of after construction.
- Wash work clothes separately from other household clothing before reuse.
- Fire retardant treated wood should not be used where it may come into direct or indirect contact with drinking water.
- Do not use fire retardant treated wood under circumstances where it may become a component of food, animal feed, or beehives.
- Do not use fire retardant treated wood as mulch.
- Only fire retardant treated wood that is visibly clean and free of surface residue should be used.
- If the wood is to be used in an interior application and becomes wet during construction, it should be allowed to dry before being covered or enclosed.
- Disposal Recommendations - Fire retardant treated wood may be disposed of in landfills or burned in commercial or industrial incinerators or boilers in accordance with federal, state, and local regulations.

IMPORTANT INFORMATION (continued)

- If you desire to apply a paint, stain, clear water repellent, or other finish to your fire retardant treated wood, we recommend following the manufacturer's instructions and label of the finishing product. Before you start, we recommend you apply the finishing product to a small exposed test area before completing the entire project to insure it provides the intended result before proceeding.
- Projects should be designed and installed in accordance with federal, state, and local building codes and ordinances governing construction in your area and in accordance with the National Design Specifications (NDS) and the Wood Handbook.
- Mold growth can and does occur on the surface of many products, including untreated and fire retardant treated wood, during prolonged surface exposure to excessive moisture conditions. To remove mold from the treated wood surface, wood should be allowed to dry. Typically, mild soap and water can be used to remove remaining surface mold. For more information visit www.epa.gov.
- Use fire retardant treated wood safely. Always read the label and product information before use.

For a complete specification call Koppers Performance Chemicals at 800-585-5161.

This is not a stand alone document and must be read in conjunction with other FlamePRO brand fire retardant treated wood literature and test data cited in the literature. For example, refer to the FlamePRO Specifications and the FlamePRO Limited Warranty Agreement. The only warranties made by Koppers Performance Chemicals are as set forth in the "FlamePRO Limited Warranty Agreement".

For more information, call 800-585-5161 or visit www.kopperspc.com

FlamePRO treated wood products are produced by independently owned and operated wood treating facilities. FlamePRO® is a registered trademark of Koppers Performance Chemicals Inc. © 4/2019



FlamePRO®

FIRE RETARDANT TREATED WOOD





FlamePro FRTW products comply with AWPAs UC-1 and UCFA use category systems, FlamePro treatment process meets the AWPAs T1 standard and FlamePro chemical has been analyzed to confirm the formulation meets AWPAs P50 standard.

FlamePRO brand fire retardant treated wood is typically specified for use in interior areas not exposed to the weather or wetting and where the adopted building code permits the use of wood or fire retardant treated wood.

- Independently Tested
- Highly Cost Effective
- Quality Monitored by Independently Inspection Agency
- Limited Warranty
- Pressure Treated (Not a Paint or Coating)
- Low Corrosion to Metal, Hardware and Fasteners
- Low Hygroscopicity
- Low Smoke Development Values
- Low Flamespread Index Values
- UL GREENGUARD GOLD, Low VOC
- ICC-ESR Report-4244
- Superior Strength Durability
- ASTM E84 Extended 30-minute Test
- ASTM E119 1 & 2 Hour Wall Assemblies
- Optional Color Indicator for Building Site Recognition

* When designing any structure it is the responsibility of the design professional to take into account environmental, duration of load and other factors as set forth in the NDS and all other applicable design standards, codes, etc. This brochure should be regarded as an adjunct to, and not a substitute for these mandatory and historical references.

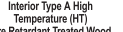

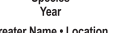


Panel/Sheathing Thickness	Span Rating for Untreated Roof/Sub-floor Sheathing	FlamePro Roof Sheathing Maximum Total Load (psf)				FlamePro Wall or Subfloor
		SPAN (INCHES)	CLIMATE ZONE			SPAN (INCHES)
			1A	1B	2	
15/32, 1/2	32/16	24	31	47	68	16
19/32, 5/8	40/20	24	48	74	107	20
		32	27	42	60	20
23/32, 3/4	48/24	32	34	52	76	24
7/8		48	15	23	34	24
		1	32	43	66	95
48			19	29	42	24
1-1/8		32	58	88	127	24
		48	26	39	57	24
		32	73	111	161	24
		48	32	49	71	24

- 1 For Surface Temperatures $\leq 100^{\circ}\text{F}$, use Untreated Span Ratings.
- 2 Allowable total loads are for unsanded, Structural 1 & 2 Grade plywood, manufactured with Group 1 Species, stress grade S-2 ($F_b=1650$ psi), one-and-two span conditions.
- 3 For allowable live loads, subtract dead load (assumed to be 8 psf) from total loads listed above.
- 4 Climate Zone definition:
 - Zone 1 – Minimum design roof live load or maximum ground snow load ≤ 20 psf (960 Pa)
 - Zone 1A – Southwest Arizona, Southeast Nevada (area Bounded by Las Vegas-Yuma-Phoenix-Tucson)
 - Zone 1B – All other qualifying areas of the United States
 - Zone 2 – Maximum ground snow load > 20 psf (960 Pa)
- 5 For other load conditions, contact manufacturer.

FlamePRO Fire Retardant pressure treated wood products are backed by a 50 Year Limited Warranty Program from Koppers Performance Chemicals Inc. (KPC). The Limited Warranty provides protection against a reduction in strength below the strength properties published in ESR-4244 caused by the FlamePRO fire retardant chemical. See Warranty for details. Available at Koppers Performance Chemicals Inc., Attn: Consumer Affairs, P. O. Drawer Q, Griffin, Georgia 30224-0249 or visit www.kopperspc.com



 <p>THE RETARDANT TREATED WOOD</p> <p>Interior Type A High Temperature (HT) Fire Retardant Treated Wood</p> <p>ESR-4244 KDAT</p> <p>Species _____ Year _____</p> <p>Treater Name + Location _____</p>	<p>LUMBER</p> <p>FLAME SPREAD/SMOKE DEVELOPED: ASTM E84 30 MINUTE TEST: 25 or less</p> <p>TP Monitored (AA-696) STD-FLP-18</p>
 <p>THE RETARDANT TREATED WOOD</p> <p>Interior Type A High Temperature (HT) Fire Retardant Treated Wood</p> <p>ESR-4244 KDAT</p> <p>Species _____ Year _____</p> <p>Treater Name + Location _____</p>	<p>LUMBER</p> <p>FLAME SPREAD/SMOKE DEVELOPED: ASTM E84 30 MINUTE TEST: 25 or less</p> <p>SP1B Monitored (AA-650) STD-FLP-18</p>
 <p>THE RETARDANT TREATED WOOD</p> <p>Interior Type A High Temperature (HT) Fire Retardant Treated Wood</p> <p>ESR-4244 KDAT</p> <p>Species _____ Year _____</p> <p>Treater Name + Location _____</p>	<p>UL Classified FR-S LUMBER</p> <p>FLAME SPREAD/SMOKE DEVELOPED: 30 MINUTE TEST: 25 or less</p> <p>STD-FLP-18</p>